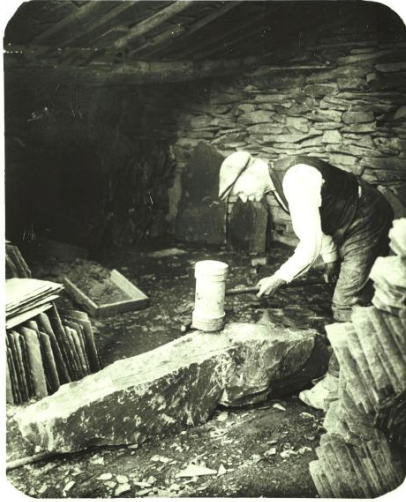


Processes Used in Slate Making

What is the miner doing?
What tool is he using?



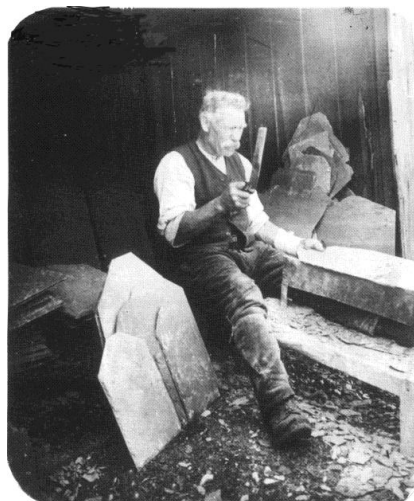
What is this process called?
What is the purpose of this process?

What is the name of this process?



What happens to the slate during this process?

What is the miner using to dress the slates?



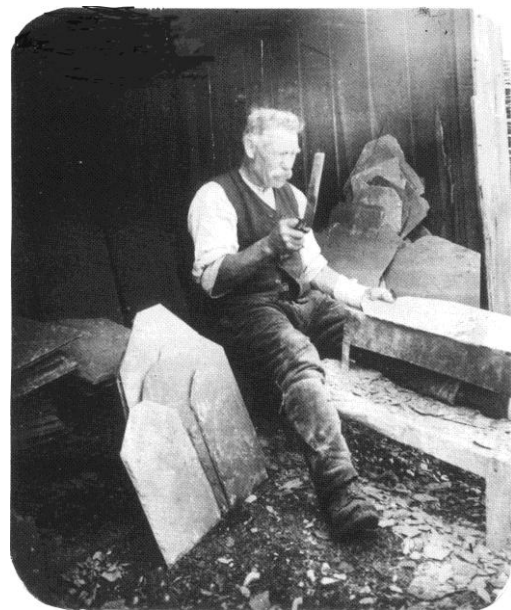
What does 'dressing' the slates mean?

The Mining Process

The slate was extracted in large blocks or 'clogs', which were first 'docked' or reduced in size with a chisel and mallet, cutting across the grain. After 1856, this process was replaced by sawing. The docked or sawn block was then 'rived' or split down the grain. The resulting thin shapes were dressed to shape on a 'slate anvil' using a slate knife or 'whittle' although this process was also mechanised in the 1890s.



Riving slate c.1910



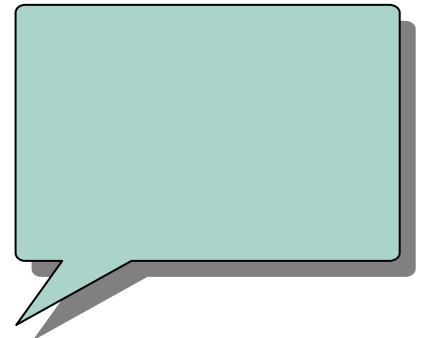
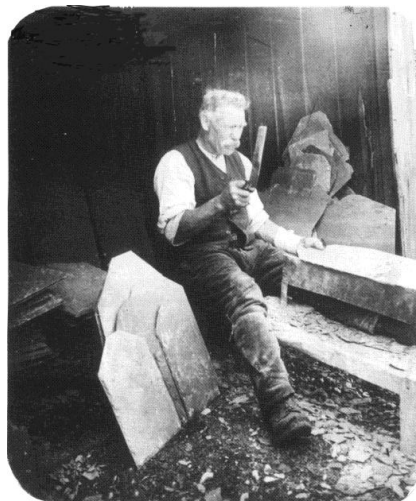
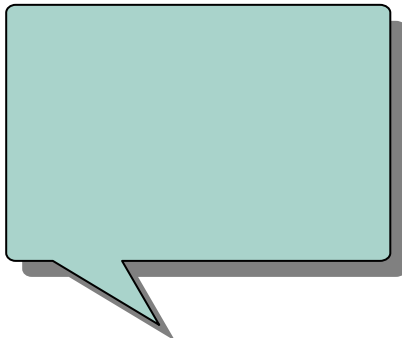
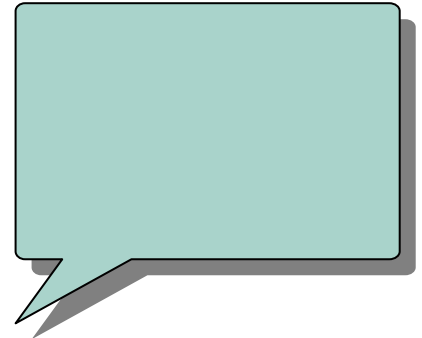
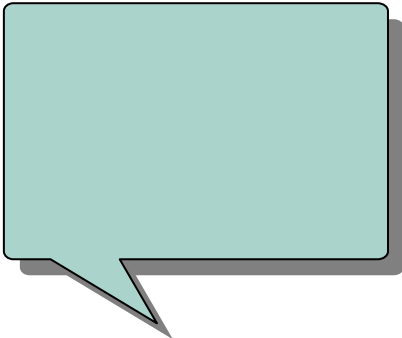
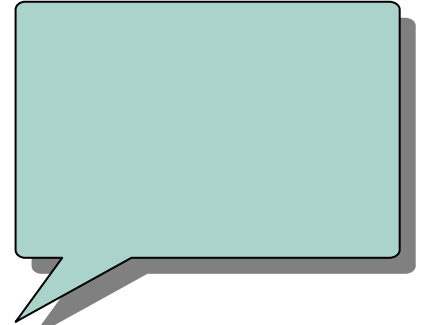
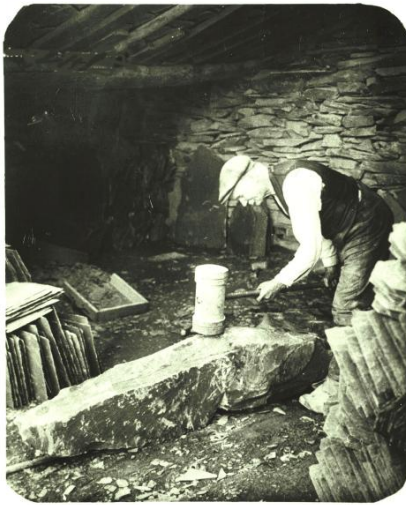
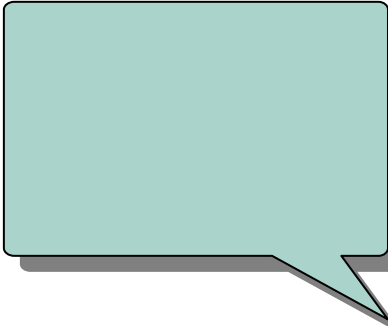
Dressing a roof slate c.1910



Docking a slate clog c.1910

Slates were finished in stone-built huts on the mountain near the quarries, or in the mines, until the construction of a 'factory' at The Hause in the 1920s. Honister slate was used extensively in local buildings but the best quality roofing slate was exported far afield.

Processes Used in Slate Making



Processes Used in Slate Making

